



Anvil Crescent | | Broadstone | BH18 9DZ

Asking price £750,000

H **H**
HARDWICK
ESTATE AGENTS

Key features

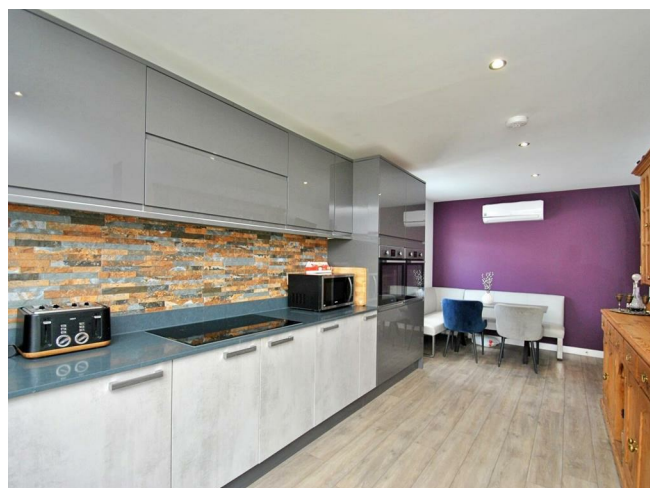
- 2,206 sq ft
- Five bedrooms
- 2 en-suite & family bathroom
- Open plan living area & kitchen
- Modern fittings throughout
- Corner plot with ample driveway parking
- Secluded, low maintenance garden
- Air conditioning (cold & heat)
- Large kitchen with fitted appliances
- Double glazed

Description

An impressive, detached home offering spacious and versatile accommodation with 5 bedrooms and 3 bathrooms situated in a desirable location.



Directions



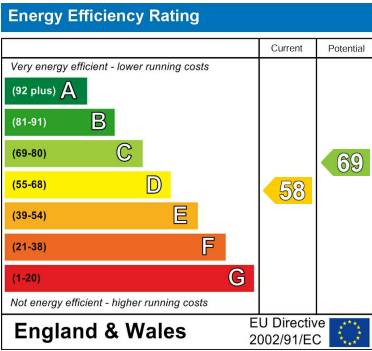


Floor plans



Total Area: approx 205.0 m² ... 2206 ft²

All measurements are approximate and for display purposes only.



Council Tax Band D EPC Rating D



6 Hiley Road
Poole
BH15 3BQ
01202 094277
info@hardwickea.co.uk